

HOWTO Install Compiere 2.5.1g and Fyracle 0.8.4 on SuSE Linux 9.2

Tedi Heriyanto *

February 17, 2005

Abstract

In this article, I will be your guide to install Compiere 2.5.1g and Fyracle database 0.8.4 on a Linux system (I have tested it on SuSE Professional 9.2).

Please be aware that the softwares used in this article are still regarded as beta quality. Use it at your own risk.

1 Introduction

On December 14, 2004, I read an article on CNET about the development of Fyracle. A database system based on FirebirdSQL that can mimic Oracle PL/SQL feature. In the article, it was mentioned that the motive behind the development of Fyracle was there is a growing need for it.

An open source ERP/CRM system called Compiere depends on Oracle database to work properly. Unfortunately, Oracle database is very expensive, small and medium enterprises cannot afford it.

The Compiere's developers have already tried to port the Oracle dependent code, but there are no good news until now.

On February 1, 2005, Janus Software and Jotel released Fyracle version 0.8.4 and Compiere 2.5.1.g. I download them :

- fyracle-demo-bin-installer.bin
- compiere2.zip

Beware that the **Fyracle** was still in beta quality. :D

*Want to read my other articles, please check my website <http://www.tedi-h.com>

2 Requirements

Before you can install Compiere and Fyracle make sure you already have the following softwares installed in your system :

- Java Development Kit 1.4.1. I use JDK 1.4.2. Although Compiere will complain about it, but it will run, so we can ignore the warning messages. :D
- ncurses
- Xaw3d

3 Installation

3.1 Fyracle 0.8.4 Installation

After successfully download Fyracle binary, do the followings :

- Make the Fyracle binary installer executable :

```
$ chmod 755 fyracle-demo-linux-installer.bin
```

- Run the Fyracle installer (You have to become root to do this) :

```
$ su
Password:
# ./fyracle-demo-linux-installer.bin
```

There are two installation version, graphical version and text version.

Notes : At first, I got only the text version. Later on, I knew that SuSE Linux 9.2 has access control enabled by default, so it didn't allow root to connect to the X server. To overcome this, login to other console as user, and give the following command :

```
$ xhost +
access control disabled, clients can connect from any host
```

You can choose which installation version you like.

- (Text version)

```
-----
Welcome to the Fyracle Setup Wizard
-----
```

Please read the following License Agreement. You must accept the terms of this agreement before continuing with the installation.

Press [Enter] to continue :

This product contains software that is licensed to you under a variety of licenses, such as the Initial Developer Public License (IDPL), the (Library) General Public License (LGPL/GPL) and the Interbase Public License (IPL).

You can find the text of these licenses in the documentation directory of each component. In order to use a software component, you must accept the license conditions for that component.

Do you accept this license? [Y/n]: y

Please specify the directory where Fyracle will be installed

Installation Directory [/opt/fyracle-0.8.2]: /opt/fyracle-0.8.4

Setup is now ready to begin installing Fyracle on your computer.

Do you want to continue? [Y/n]: y

Please wait while Setup installs Fyracle on your computer.

```
Installing
0% _____ 50% _____ 100%
#####
```

Setup has finished installing Fyracle on your computer.

View Readme file? [Y/n]: n

- (Graphical version) Just follow the installer instruction screen.
Hints : Just click "Forward", "Yes", change the installation directory to /opt/fyracle-0.8.4, "Forward", "Forward", "Forward", "Finish". :D

Fyracle will be installed on `/opt/fyracle-0.8.4`. (You can choose whichever directory suits you).

- Test the Fyracle PL/SQL compiler :

```
$ /opt/fyracle-0.8.4/bin/plsql -i
Fyracle PL/SQL compiler version 0.8.4/demo
This demo version is limited to 500 character statements and scripts

Use CONNECT or CREATE DATABASE to specify a database
SQL>
```

- Test the Fyracle QLI :

```
$ /opt/fyracle-0.8.4/bin/qli -i
Welcome to QLI
Query Language Interpreter
QLI>
```

Next, we are going to install Compiere 2.5.1g which has been ported to use Fyracle database.

3.2 Compiere 2.5.1g Installation

- Extract `compiere2.zip` to `/opt` folder.

(You can choose whichever directory you like, just make sure you have permission to write to it. If you only want to run Compiere for yourself, you can extract it to your home directory).

```
$ su
# unzip compiere2.zip -d /opt/
Archive:  compiere2.zip
  inflating: /opt/Compiere2/build.xml
  inflating: /opt/Compiere2/Compiere.properties
   creating: /opt/Compiere2/data/
  inflating: /opt/Compiere2/data/compiere.fdb
  inflating: /opt/Compiere2/data/Compiere.log
   creating: /opt/Compiere2/data/import/
...
```

- (As your normal user) Add the following environment variable to your shell profile. For BASH shell, its `.bash_profile` :

```
JAVA_HOME=/usr/java/j2sdk1.4.2_01
CLASSPATH=/usr/java/j2sdk1.4.2_01
COMPIERE_HOME=/opt/Compiere2
LD_LIBRARY_PATH=$LD_LIBRARY_PATH:/usr/lib
```

```
PATH=$PATH:$HOME/bin:$JAVA_HOME/bin
```

```
export PATH JAVA_HOME COMPIERE_HOME CLASSPATH LD_LIBRARY_PATH
```

- Reload the shell profile :

```
. .bash_profile
```

4 Running Compiere

Before you can run Compiere, you need to start Fyracle database server (if you want to use standalone Fyracle). But, if in your system `xinetd` is running and you have configured the `firebird` file according to the instruction in "Fyracle as xinetd service" subsection, you can skip the rest of this section and go to "**Starting Compiere**".

4.1 Starting Fyracle

Since version 0.8.4, you can start Fyracle as a standalone program or as a Xinetd service. You only need to choose one method.

4.1.1 Standalone Fyracle

Before you can start Compiere, you need to start Fyracle server first (You have to become root to do this) :

```
# /opt/fyracle-0.8.4/bin/fbserver
```

4.1.2 Fyracle as xinetd service

In my system, the default `/etc/xinetd.d/firebird` file included with Fyracle version 0.8.4 cannot be run. I use xinetd 2.3.

So I change the file content to the following :

```
service gds_db
{
#       flags                = REUSE
        socket_type           = stream
        wait                  = no
        user                   = firebird
```

```

#      user                = @FBRunUser@
      log_on_success        += USERID
      log_on_failure        += USERID
      server                = /opt/fyracle-0.8.4/bin/fb_inet_server
      server_args           = -e /opt/fyracle-0.8.4
#      server              = ${exec_prefix}/sbin/gds_inet_server
#      server              = @exec_bindir@/gds_inet_server
      disable               = no
}

```

The difference between the new version and the default one are :

- I comment out the **flags=REUSE**, because it is deprecated.
- I move **-e /opt/fyracle-0.8.4** to the **server_args**

After that, you need to restart `xinetd` :

```
# rcxinetd restart
```

4.2 Starting Compiere

You can give the following command to start Compiere :

```
$ sh /opt/Compiere2/RUN_Compiere2.sh
```

Notes : I am a lazy man, so I change the `RUN_Compiere2.sh` permission in order to be execute directly without type `sh` :

```
# chmod 755 /opt/Compiere2/RUN_Compiere2.sh
```

Now I can run it with the following command :

```
$ /opt/Compiere2/RUN_Compiere2.sh
```

I save three keystrokes. :D

For the first time, it will ask you to fill the configuration like Figure 1.

In my system, the connection configuration are :

```

Database Type : Firebird
Database Host : localhost
Database Port : 3050
Database Name : /opt/Compiere2/data/compiere.fdb
User/Password : sysdba/masterkey

```

After you have successfully configure the connection, then it will display Figure 2.

Just accept the default values and click OK. It will display Figure 3

You only need to click OK.

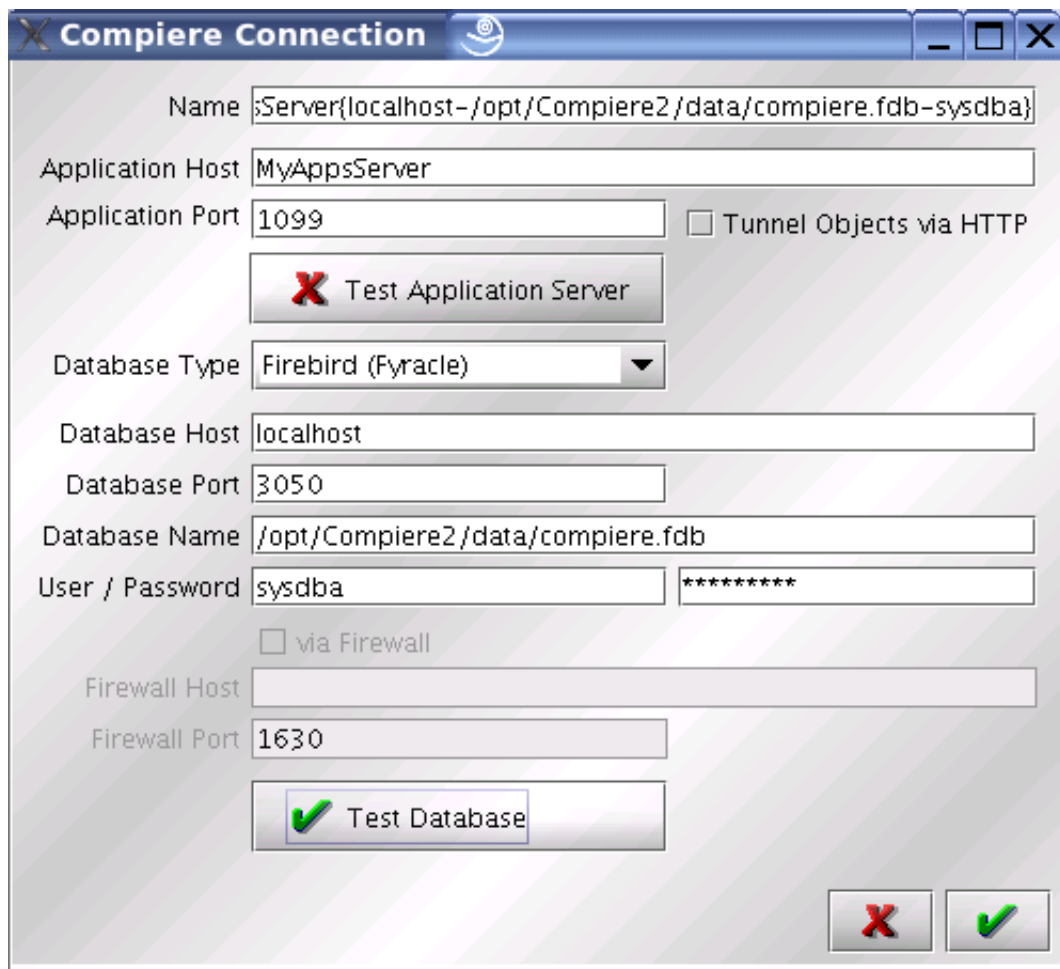


Figure 1: Compiere Connection

4.3 Enjoy

Next you will see Figure 4. It display Compiere running with all its glory.



Figure 2: Compiere Login Page 1

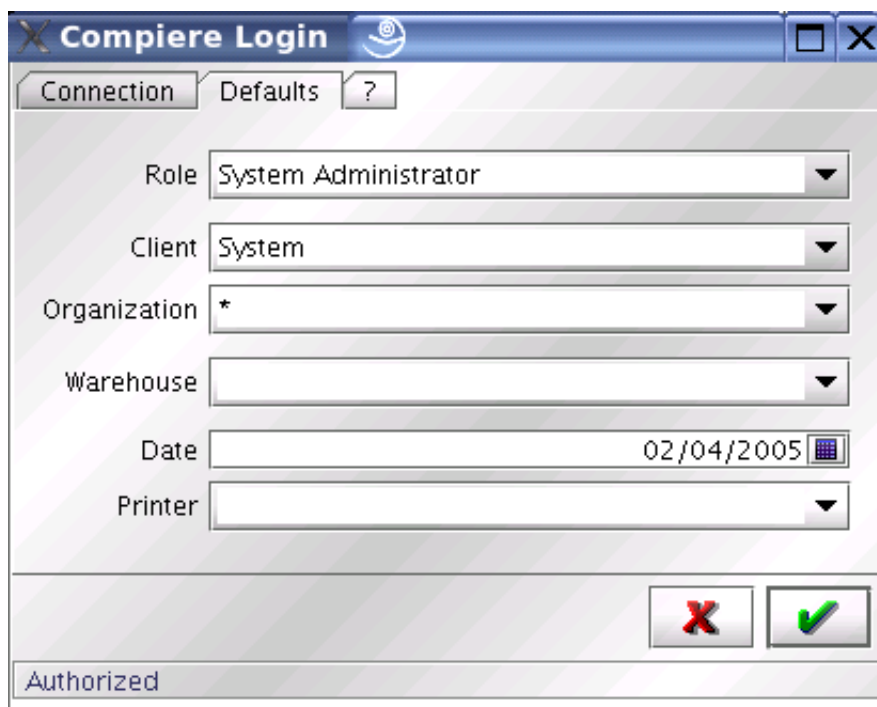


Figure 3: Compiere Login Page 2

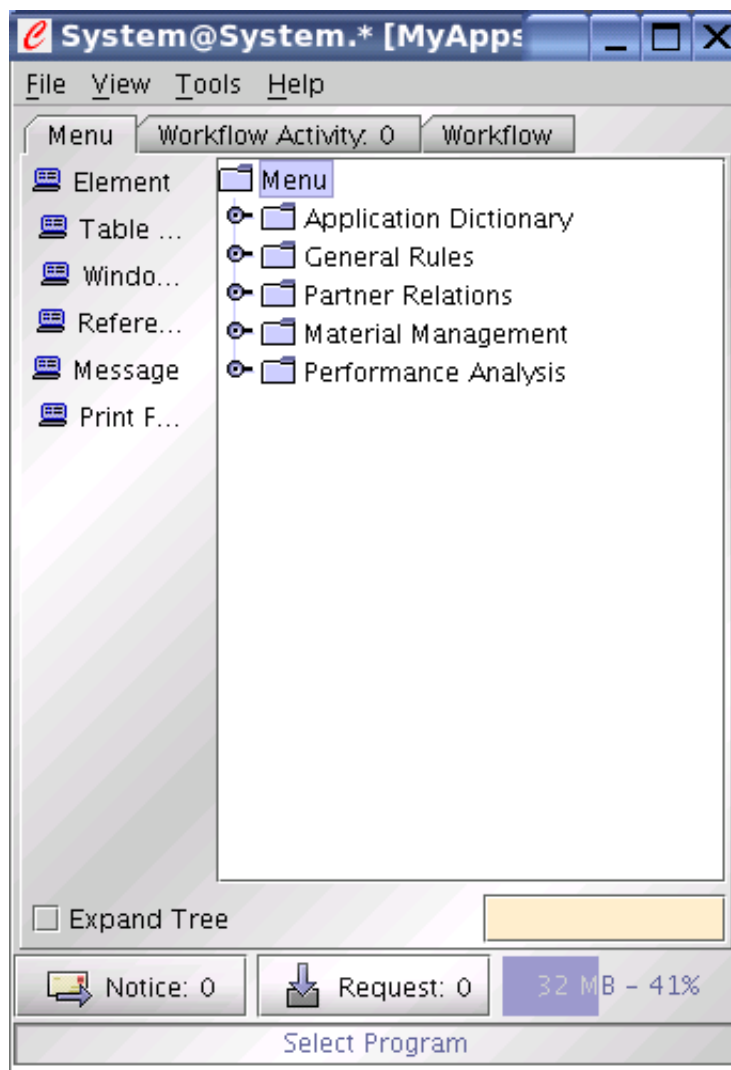


Figure 4: Compiere Main Page